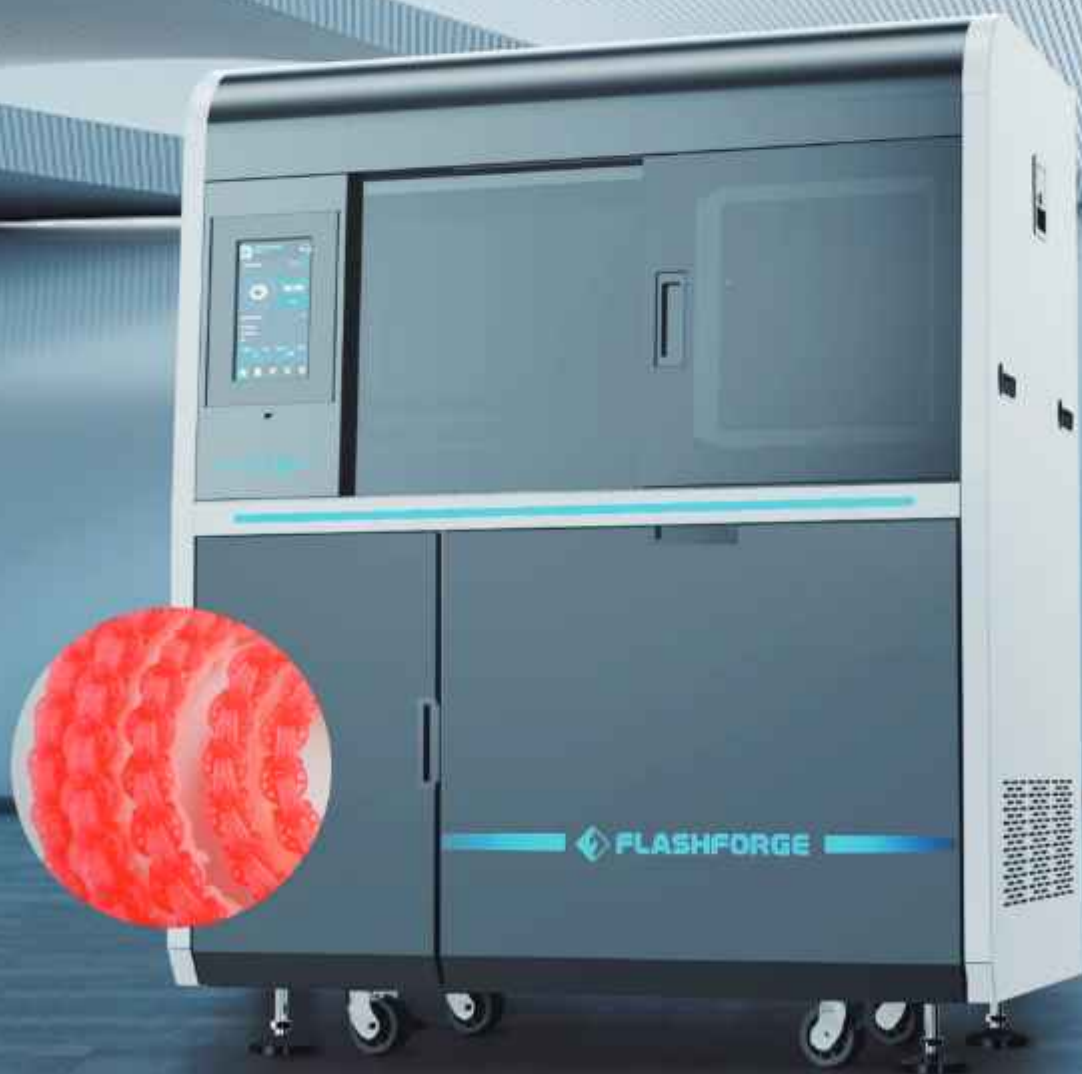




Precision Unmatched: Top Pick for K-Gold Jewelry

WaxJet 510

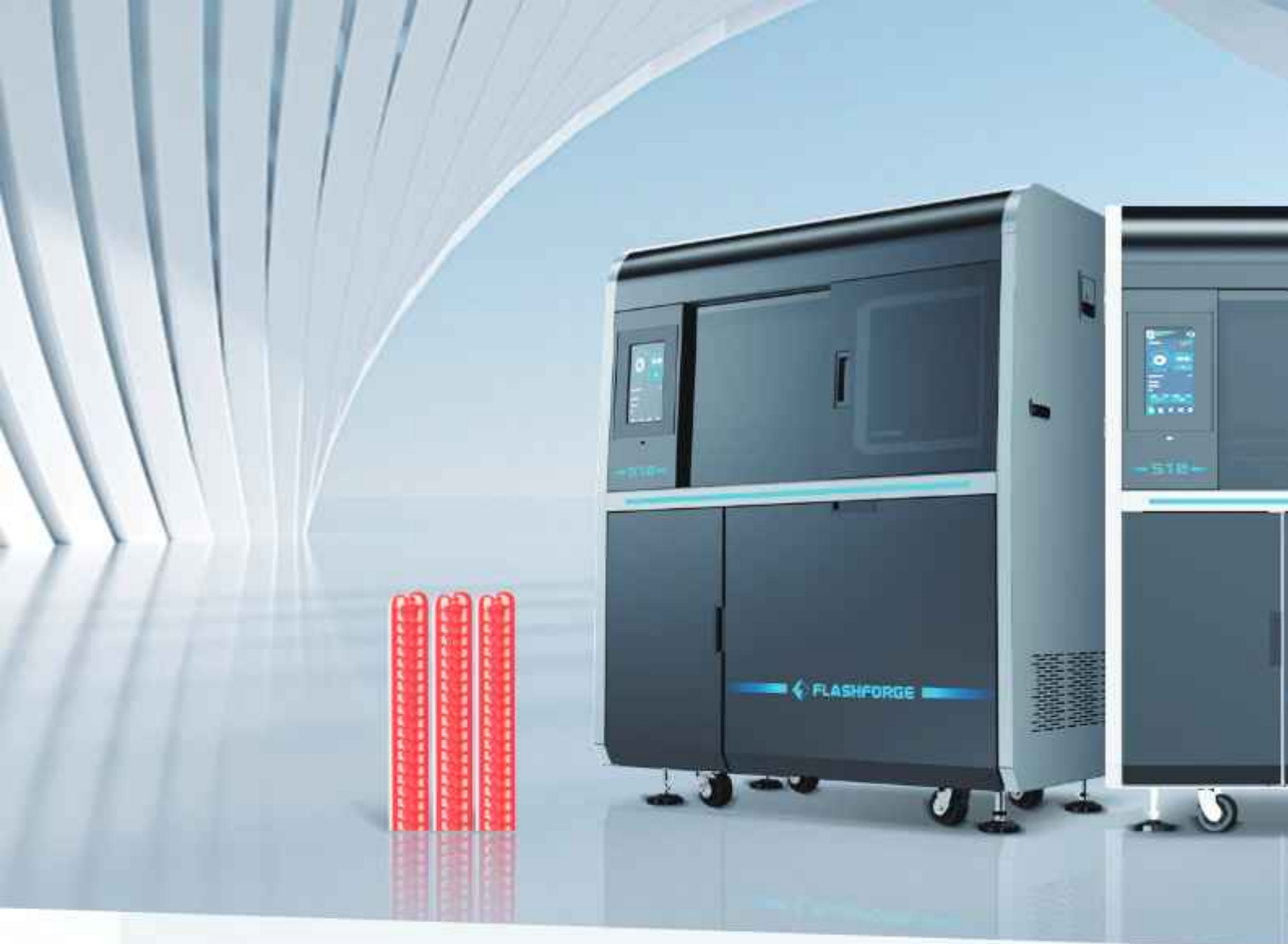


Contents

01	●	Precision Redefined, Resolution Fully Upgraded	03
02	●	Details Assured, Complex Styles Built Perfectly	05
03	●	Versatile Applications, Tailored to Your Needs	07
04	●	Integrated Management, From Data to Product	09
05	●	Exclusive Materials, Effective in Boosting Yield	11
06	●	Worry-Free After-sales Service, Quality Results	13
07	●	Qualification Certificates	15
08	●	Technical Specifications	16

Digital Solution for K-Gold Jewelry Casting Wax Patterns Production

WaxJet 510 utilizes advanced wax jetting tech for precise layer-by-layer printing, delivering intricate details and smooth surfaces for wax models. Tech optimization cuts wax waste, boosts yield, slashing usage costs. With its high precision and low waste, it offers a reliable and efficient solution for crafting K-Gold wax models, driving digital transformation in the jewelry industry.



Precision Redefined,
Resolution Fully Upgraded

2900 x 2900 x 1700 DPI

New Precision in Jewelry 3D Printing



15 μ m Layer Thickness

Enhance detail and curve accuracy, improving print precision and surface quality.



Micron-Level Motion Sensor

Precisely control wax jetting position, achieving perfect precision.



PID Control System

Rapidly respond to changes, ensuring printing stability and uniformity.

Details Assured, Complex Styles Built Perfectly

K-Gold Jewelry Features:



Stone Setting



Precise Interlocking



Smooth Surface



Customization



Delicate Texture

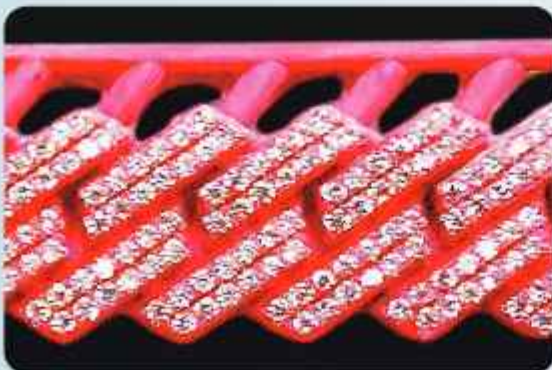
Wax Pattern and Finished Product



Wax Pattern

Chain

Finished Product





**Rapid
Prototyping**

03

**Versatile Applications,
Tailored to Your Needs**

Customized Printing



Small-Batch Production



Integrated Management, From Data to Product

End-to-End Support

01

Slicing

WaxJetPrint

One-click layout,
saving time and effort



02

3D Printing

WaxJet 510

Unmanned,
24/7 continuous printing





Special Wax Material

Strong tenacity, easy to cast



Multiple Cleaning Kits

Select as needed

03

Printing
Material

04

Post-Processing

05

Finished Wax
Patterns

Finished Wax Patterns





Exclusive Materials, Effective in Boosting Yield



Red Wax
Part material

Increased capacity
Effectively manage costs



White Wax
Support material

Upgraded wax material
Yield more prints per unit time







Worry-Free After-sales Service, Quality Results



Installation & Maintenance Support

Offer comprehensive installation services to ensure accurate setup of each device and provide regular and emergency maintenance support to keep devices operating at optimal performance.



New User Training Guide

Provide training for new users to quickly grasp equipment operation methods and management skills. Training is not limited to initial setup; users can request advanced training as needed.



Remote Upgrade Service

Support real-time monitoring of device status and rapid upgrade to the latest software version online, ensuring devices remain in optimal state, further enhancing user experience.



1-Year Warranty



Prompt Response



Expert Team
Available 24/7

Branches



Global Network

China, USA, Turkey, Italy, India, Thailand, South Korea, Japan, UAE, South Africa, Egypt, Morocco, Spain, Britain, Germany, Poland, Mexico, Brazil, Colombia, Australia, Vietnam, Malaysia, Kazakhstan, Sweden, Lebanon, Jordan etc.

Qualification Certificates

- 🏆 SDS Certificate
- 🏆 ISO9000 Certificate
- 🏆 RoHS Certificate
- 🏆 CE Certificate



Technical Specifications

Product Specification

Printing Technology	Multijet Printing (MJP)
Build Volume	289*208*100mm
Printing Mode	XHD: 2900*2900*1700 dpi; layer thickness: 15μm
Dimensional Accuracy	±0.04mm/20mm
Power Supply	AC220-240V, 50Hz, 4KW
Equipment Dimensions	1352*775*1600mm
Net Weight	480kg
Gross Weight	630kg
Package Size	1530*900*1837mm

Software & Connectivity

Slicing Software	WaxJetPrint
Supported File Format	.stl/.slc
Email Notification	√
Hard Disk Capacity	500G
Connectivity	Network 10/100/1000 Ethernet/USB
Supported Operating System	Windows 7 / Windows 10 (64bit)
Working Environment	Temp.: 18-26°C, Humidity: 30-70%



Material Specification

Material Name	FFWJ1200	FFMS3200
Material Type	Part wax	Support wax
Net Weight	1.5kg/bottle	1.6kg/bottle
Composition	100% Wax	Wax support material
Color	Red	White
Density@95°C(liquid)	0.79g/cm ³	0.85g/cm ³
Melting Point	68°C	55°C
Softening Point	63°C	-
Volumetric Shrinkage ^①	1.10%	-
Linear Shrinkage	0.70%	-
Needle Penetration Hardness ^②	9	-
Ash Content ^③	<0.01%	-
Description	High-precision casting wax	Hands-free dissolvable support wax

*Conditions: ①Volumetric Shrinkage SH/T 0588-1994; ②Needle Penetration Hardness GB/T 4985-2010; ③Ash Content GB/T 14235.3-1993



Zhejiang Flashforge 3D Technology Co., Ltd.

Address: 2nd Floor, Building B, Huaxing Development Building,
No.328 Wen'er Road, Xihu District, Hangzhou City, Zhejiang Province

Tel: +86 579 82273989

E-mail: waxjetsupport@flashforge.com



Follow Us